



Bahia Corinthian Yacht Club

2020 Bogart Race

Sailing Instructions

October 10, 2020

1. ORGANIZING AUTHORITY

Bahia Corinthian Yacht Club (BCYC) is the Organizing Authority for the Bogart Race.

2. RULES

- 2.1 The Race will be governed by the rules as defined in the current Racing Rules of Sailing, (*RRS*), the rules of the Performance Handicap Racing Fleet of Southern California (PHRF), and the Notice of Race, except as altered by these Sailing Instructions.
- 2.2 The Race is classified as a Category "A" Event in accordance with ISAF Regulation 20.
- 2.3 Boats are subject to inspection by the appropriate fleet coordinator to ensure conformity to the applicable class rules, bylaws and/or measurement certificates.
- 2.4 *RRS* 55 is changed by adding the following sentence to the rule: "However, discarding elastic or wool bands when setting a sail is permitted."
- 2.5 US Sailing Safety Equipment Requirements (USSER) for Near Shore apply.
- 2.6 USSER 2.4.1 shall also apply. A boat's deck including the headstay shall be surrounded by a suitably strong enclosure, typically consisting of lifelines and pulpits, meeting the requirements in USSER 2.4.2 to 2.4.8.

3. NOTICES TO COMPETITORS

Notices to competitors will be posted on the Official Notice Board located near the BCYC front office and on the BCYC website at www.bcy.org.

4. CHANGES TO SAILING INSTRUCTIONS

- 4.1 Any change to the sailing instructions will be posted at BCYC and on the BCYC website before 0900 hours on the day of the race.
- 4.2 Race Committee may also issue verbal changes to the sailing instructions during check-in while code flag L (Come Within Hail) is displayed.
- 4.3 Any change to the schedule of racing will be posted by 1900 hours on the day before the race.

5. SIGNALS MADE ASHORE

- 5.1 Signals made ashore will be displayed on the flagpole at BCYC.
- 5.2 When flag AP is displayed ashore, racing is postponed.
- 5.3 First Warning will be no less than 1 Hour after AP is removed.

6. SCHEDULE

- 6.1 The scheduled date of the race is October 10, 2020.
- 6.2 The scheduled time for the first warning signal is **1055 hours.**

7. CLASSES BREAKS

7.1 Class Breaks will be determined using the PHRF Area D RLC Rating.

7.2 Classes will be posted on the BCYC website before 1700 hours on the day before the race.

8. RACING AREA

The Racing Area will be in the Pacific Ocean off Newport Beach, CA.

9. MARK LOCATIONS AND COURSE

9.1 Mark locations are shown in Attachment A

9.2 The course to be sailed will be displayed from the Race Committee boat

10. STARTING

10.1 The Start Line will be between an orange flag on or near the Race Committee boat to starboard and an orange flag on a staff to port.




10.2 Races will be started by using *RRS 26*.

10.3 A boat whose warning signal has not been made shall avoid the starting area.

10.4 Prior to the first warning signal each boat shall sail by the Race Committee boat and hail her sail number.

10.5 To alert boats that the sequence of starts is about to begin, multiple short sound signals will be given approximately one (1) minute before the first warning signal.

10.6 The scheduled order of start and the flags used by Race Committee for signaling will be:

CLASS	SCHEDULED ORDER OF START	CLASS FLAG
C	1	
B	2	
A	3	

11. RECALLS

11.1 Individual recalls will be signaled in accordance with *RRS 29.1*.

11.2 General recalls will be signaled in accordance with *RRS 29.2*.

12. FINISHING

The Finish line will be between an orange flag on the Race Committee boat at the port end of the line and an orange flag on a staff.

13. TIME LIMIT

The Time Limit is 1700 hours. Boats finishing after the Time Limit will be scored Did Not Finish. This changes *RRS 35*.

14. PENALTY SYSTEM

RRS 44.1 is changed to a One-Turn Penalty.

15. PROTESTS AND REQUESTS FOR REDRESS

- 15.1 A boat intending to protest shall comply with *RRS* 60 & 61.1 and shall also notify the Race Committee at the finish line of her intention to protest and identify the other boats involved.
- 15.2 Protests shall be on written forms, which are available at the BCYC Front Office. Protests shall be delivered to the BCYC Front Office within the Protest Time Limit.
- 15.3 The Protest Time Limit is 60 minutes after the Race Committee boat has docked. This changes *RRS* 61.3
- 15.4 The parties will be advised under *RRS* 63.2 of when and where the protest will be heard, which may be on a date and time other than immediately following the Protest Time Limit.
- 15.5 Notice of protest by the Race Committee or Protest Committee will be posted to inform boats under *RRS* 61.1 (b).

16. SCORING

- 16.1 Scoring will be according to *RRS* A4.1 Low Point System for each day's race.
- 16.2 A boat that did not start, did not finish, was disqualified, or retired, shall be scored points for the finishing place one more than the number of **starters** in the race. This modifies *RRS* A4.2.

17. RETIREMENTS

A yacht that retires from a race shall notify the Race Committee on VHF Channel 68 as soon as possible.

18. OFFICIAL BOATS

Official boats will be marked using Race Committee Flags.

19. RADIO COMMUNICATION

- 19.1 A competitor shall neither make radio transmissions while racing nor receive radio transmissions not available to all boats. This restriction also applies to mobile telephones.
- 19.2 Race Committee will monitor VHF Channel 16 for emergencies.

20. PRIZES

Trophies will be given out after racing.

21. DISCLAIMER OF LIABILITY

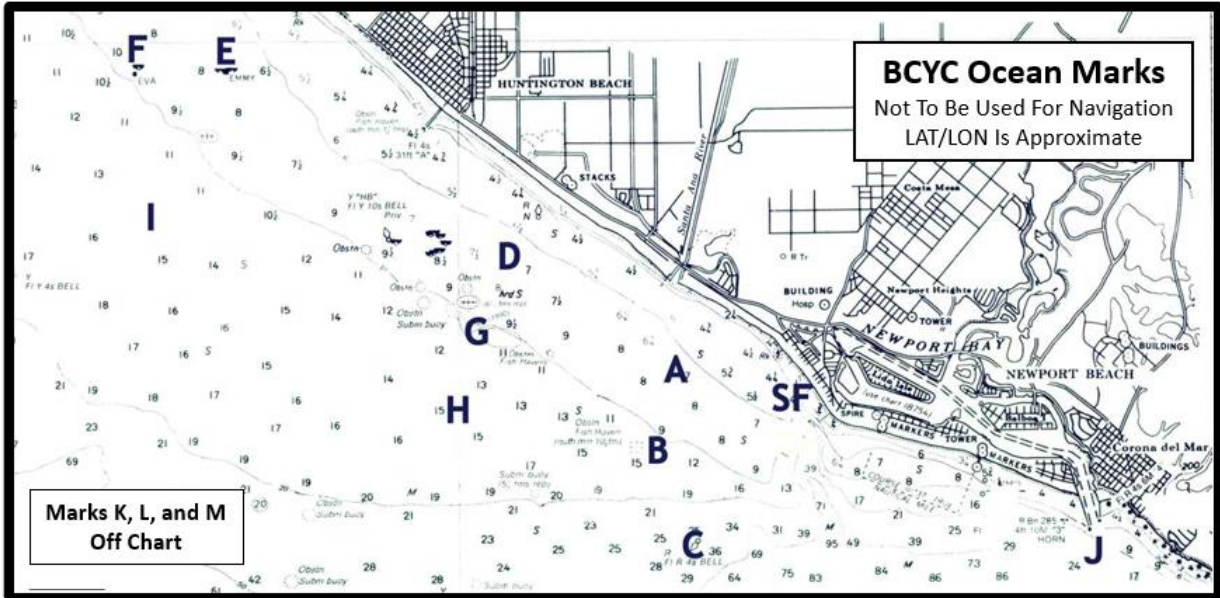
Competitors participate in the race entirely at their own risk. See *RRS* 4, Decision to Race. The organizing authority will not accept any liability for material damage or personal injury or death sustained in conjunction with or prior to, during, or after the regatta.

22. INSURANCE

Each participating boat shall be insured with valid third-party liability insurance with a minimum cover of \$500,000.00 per event or equivalent.

ATTACHMENT A

- The following chart shows the ocean marks that may be used to define a course to be sailed.
- If the word “GATE” is displayed by Race Committee, it will refer to a gate formed on one end by Oil Island Emmy and an orange inflatable mark located approximately 300 yards SW of Emmy at approximate GPS coordinates 33° 39.643' N and 118° 02.804' W.



MARK	DESCRIPTION	LAT	LON
S/F	Start/Finish Line	N 33.36.500	W 117.56.250
A	Inflatable BCYC Mark	N 33.36.800	W 117.57.500
B	Inflatable BCYC Mark	N 33.36.000	W 117.57.700
C	Inflatable BCYC Mark	N 33.35.150	W 117.57.300
D	Inflatable BCYC Mark	N 33.37.900	W 117.59.400
E	Oil Island “Emmy”	N 33.39.700	W 118.02.650
F	Oil Island “Eva”	N 33.39.700	W 118.03.650

MARK	DESCRIPTION	LAT	LON
G	Inflatable BCYC Mark	N 33.37.200	W 117.59.800
H	Inflatable BCYC Mark	N 33.36.450	W 118.00.000
I	Inflatable BCYC Mark	N 33.38.350	N 118.03.500
J	Newport Harbor Entrance Buoy	N 33.35.100	W 117.52.700
K	Oil Island “Elly-Ellen”	N 33.35.000	W 118.07.700
L	Oil Island Esther	N 33.43.200	W 118.06.800
M	Oil Island Chaffee	N 33.44.300	W 118.08.300