



Bahia Corinthian Yacht Club

2024 Bogart Race

SAILING INSTRUCTIONS

Saturday, March 18 and Sunday, March 19

1. ORGANIZING AUTHORITY

Bahia Corinthian Yacht Club (BCYC) is the Organizing Authority for the Bogart Race.

2. RULES

- 2.1 The Race will be governed by the rules as defined in the current Racing Rules of Sailing, (RRS), the rules of the Performance Handicap Racing Fleet of Southern California (PHRF)) or of the Fleet in which it sails, and the Notice of Race, except as altered by these Sailing Instructions.
- 2.2 The Race is classified as a Category "A" Event in accordance with ISAF Regulation 20.
- 2.3 Boats are subject to inspection by the appropriate fleet coordinator to ensure conformity to the applicable class rules, bylaws and/or measurement certificates.
- 2.4 US Sailing Safety Equipment Requirements (USSER) apply.
- 2.5 Engine use is permitted subject to SI 16.6 and 16.7

3. NOTICES TO COMPETITORS

Notices to competitors will be posted on the BCYC website at www.bcy.org.

4. CHANGES TO SAILING INSTRUCTIONS

- 4.1 Any change to the sailing instructions will be posted on the BCYC website before 0900 hours on the day of the race.
- 4.2 Race Committee may also issue verbal changes to the sailing instructions during check-in while code flag L (Come Within Hail) is displayed.
- 4.3 Any change to the schedule of races will be posted on the BCYC website by 1900 hours on the day before the race.

5. SIGNALS MADE ASHORE

- 5.1 Signals made ashore will be displayed on the flagpole at BCYC.
- 5.2 When flag AP is displayed ashore, racing is postponed.
- 5.3 First Warning will be no less than 1 Hour after AP is removed.

6. SCHEDULE

- 6.1 The scheduled time for the first warning signal each day is **1055 hours.**

7. CLASSES BREAKS

- 7.1 Class Breaks will be determined using the PHRF Area D RLC Rating.
- 7.2 Starting Assignments and Class Breaks will be posted on the BCYC website before 0900 hours on the day before the first race.

8. RACING AREA

The Racing Area will be in the Pacific Ocean between Newport Beach, CA and Avalon, CA.

9. COURSES and MARK LOCATIONS

9.1 Courses will be random leg.

9.2 SATURDAY

9.2.1 Start off the Santa Ana River jetty (approximate GPS coordinates of 33.37.153 N and 117.57.395 W)

9.2.2 Round a virtual mark located at GPS coordinates of 33.20.984 N and 118.19.382 W. Round the mark to port.

9.2.3 Finish between the "CG" buoy (approximate GPS coordinates of 33.20.968 N and 118.19.382 W) and the flagpole adjacent to the Avalon Casino as shown on Attachment A.

9.3 SUNDAY – Start off the Avalon Casino in the vicinity of the CG Buoy. Round the Newport Beach harbor entrance buoy (J mark) to port. Finish inside Newport Beach Harbor between government markers #5 and #6 as shown on Attachment B.

10. STARTING

10.1 SATURDAY - The Starting Line will be between an orange flag on the Race Committee boat to starboard and an orange flag on a staff to port.

10.2 SUNDAY - The Starting Line will be between the USCG buoy to port and an orange flag on the Race Committee boat to starboard.

10.3 Races will be started by using RRS 26 using a "rolling start" method.




10.4 A boat whose warning signal has not been made shall avoid the starting area.

10.5 Prior to the first warning signal each boat shall sail by the Race Committee boat and hail her sail number.

10.6 To alert boats that a sequence of starts is about to begin, multiple short sound signals will be given approximately one (1) minute before the first warning signal.

10.7 A boat starting later than fifteen (15) minutes after her starting signal will be scored Did Not Start without a hearing. This changes RRS A5.1.

10.8 The scheduled order of start and the flags used by Race Committee for signaling will be:

CLASS	SCHEDULED ORDER OF START	CLASS FLAG
C	1	
B	2	
A	3	

11. RECALLS

- 11.1 Individual recalls will be signaled in accordance with *RRS* 29.1.
- 11.2 General recalls will be signaled in accordance with *RRS* 29.2.

12. FINISHING

- 12.1 SATURDAY - The Finish Line will be between the "CG" buoy and the flagpole adjacent to the Avalon Casino. Race Committee will be positioned ashore at the base of the flagpole to record finish times. This changes the *RRS* definition of "Other Signals".
- 12.2 SUNDAY – The finish line will be inside Newport Beach harbor between government markers #5 and #6. The Race Committee boat will be located near marker #6 and will fly a blue flag.
- 12.3 Boats shall report their engine use (total minutes that engine was in gear (even if zero minutes) to Race Committee via **VHF 68** no later than **15** minutes after finishing-
- 12.4 A minimum of thirty (30) minutes must be reported for each use of the engine. See SI 16.7 for further information.

13. TIME LIMITS

- 13.1 The Time Limit each day is 2000 hours (8 PM). Boats finishing after the Time Limit will be scored Did not finish (DNF).
- 13.2 Race Committee personnel will be on-station at the finish Lines and record times until 1800 hours. After 1800 hours, racers **shall** record their own time while finishing and **shall** report the finish time and any Engine Use Time to Race Committee on **VHF 68** no later than **15** minutes after finishing.

14. PENALTY SYSTEM

RRS 44.1 is changed to a One-Turn Penalty.

15. PROTESTS AND REQUESTS FOR REDRESS

- 15.1 A boat intending to protest SHALL comply with *RRS* 60 & 61.1 and SHALL notify the Race Committee at the finish line of her intention to protest and identify the other boats involved.
- 15.2 Protests shall be on written forms, which are available at the BCYC Front Office or from Race Committee. Protests shall be delivered to Race Committee Principal Race Officer (PRO) within the Protest Time Limit.
- 15.3 The Protest Time Limit for each day is **60 minutes** after the protesting boat has finished. This changes *RRS* 61.3
- 15.4 The parties will be advised under *RRS* 63.2 of when and where the protest will be heard, which may be on a date and time other than immediately following the close of the Protest Time Limit.
- 15.5 Notice of protest by the Race Committee or Protest Committee will be posted to inform boats under *RRS* 61.1 (b).

16. SCORING

- 16.1 The handicap distances are:
 - 16.1.1 – Saturday - 24.5 nm
 - 16.1.2 – Sunday – 31.1 nm
- 16.2 Scoring will be according to *RRS A4* Low Point System for each day's race.
- 16.3 Scoring for the Bogart Race Overall (class and overall) will be based on the sum of each days Final Corrected Time.
- 16.4 There are no throw-outs. This changes *RRS A2.1*
- 16.5 A boat that did not start, did not finish, was disqualified, or retired, shall be scored points for the finishing place **one more** than the number of **starters** in the race. This modifies *RRS A5.2*.
- 16.6 The Engine Use Penalty is $(IN-GEAR-TIME * 0.40 * \text{Square Root (LWL)})$. The Penalty will be added to the boat's Corrected Time.
- 16.7 A minimum of 30 minutes shall be recorded each time the engine is put in gear. Examples of reporting engine use follow:
 - 16.7.1 If the engine is used for 15 minutes, the reported engine use will be 30 minutes.
 - 16.7.2 If the engine is used for 47 minutes, the reported engine use will be 47 minutes.

17. RETIREMENTS

A yacht that retires from a race shall notify the Race Committee on VHF Channel 68 as soon as possible.

18. OFFICIAL BOATS

Official boats will be marked using Race Committee Flags.

19. RADIO COMMUNICATION

- 19.1 A competitor shall neither make radio transmissions while racing nor receive radio transmissions not available to all boats. This restriction also applies to mobile telephones.
- 19.2 Race Committee will monitor VHF Channel 16 for emergencies.
- 19.3 If still sailing at 1800 hours, boats shall hail the Race Committee on VHF Channel 68 to advise of their approximate location.

20. PRIZES

Trophies for each day of racing and trophies for the Series will be given out after the last race.

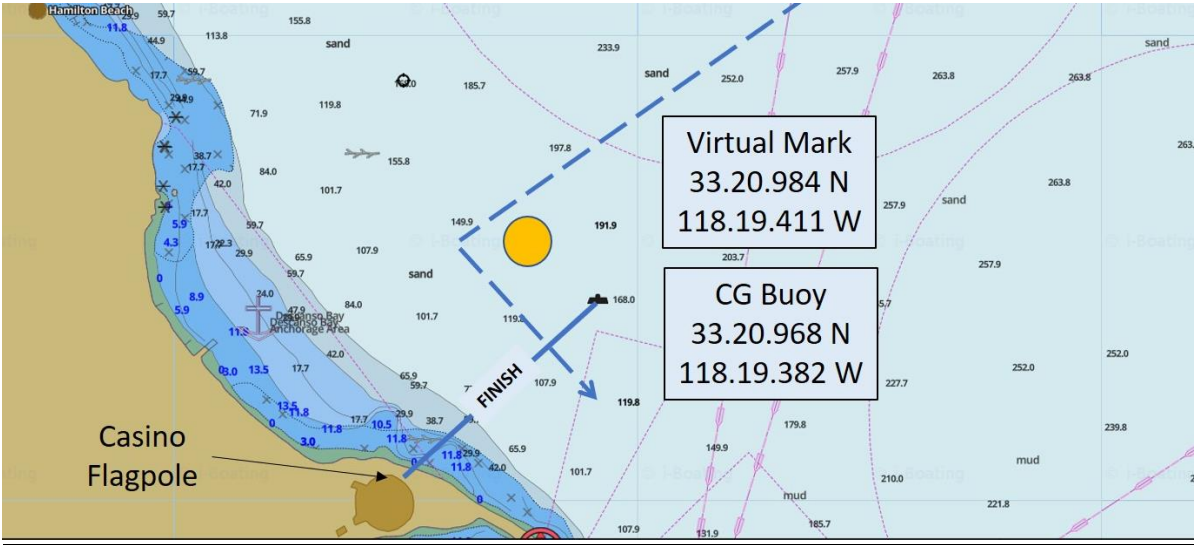
21. DISCLAIMER OF LIABILITY

Competitors participate in the race entirely at their own risk. See *RRS 3*, Decision to Race. The organizing authority will not accept any liability for material damage or personal injury or death sustained in conjunction with or prior to, during, or after the regatta.

22. INSURANCE

Each participating boat shall be insured with valid third-party liability insurance with a minimum cover of \$500,000.00 per event or equivalent.

ATTACHMENT A – Finish Area in Avalon



ATTACHMENT B – Finish Line in Newport Beach

