



2024 PHRF Championship

Sailing Instructions

August 17-18, 2024



1. ORGANIZING AUTHORITY

Bahia Corinthian Yacht Club (BCYC) is the organizing authority (OA) for the 2024 Performance Handicap Racing Fleet of Southern California (PHRF) Championship.

2. RULES

- 2.1 The Championship will be governed by the rules as defined in the current Racing Rules of Sailing, (*RRS*), the rules of the Fleet in which the boat sails, and the Notice of Race, except as altered by the Sailing Instructions.
- 2.2 The current US Sailing Safety Equipment Requirements (USSER) for Near Shore shall apply.

3. NOTICES TO COMPETITORS

Notices to competitors will be posted on-line at <https://bcycracing.org/phrf-championship-regatta/>

4. CHANGES TO SAILING INSTRUCTIONS

- 4.1 Any change to the sailing instructions will be posted on-line at <https://bcycracing.org/phrf-championship-regatta/> before 0900 hours on the day of the race.
- 4.2 Any change to the schedule of races will be posted on-line at <https://bcycracing.org/phrf-championship-regatta/> by 1900 hours on the day before the race.
- 4.3 Race Committee may also issue verbal changes to the sailing instructions during check-in while code flag L (Come Within Hail) is displayed.

5. SIGNALS MADE ASHORE

- 5.1 Signals made ashore will be displayed on the flagpole at BCYC.
- 5.2 When flag AP is displayed ashore, racing is postponed.
- 5.3 First Warning will be no less than 1 Hour after the AP is removed.

6. SCHEDULE

- 6.1 The scheduled first warning signal for both Divisions is **1200** hours each day.
- 6.2 RANDOM LEG DIVISION – One (1) Random Leg Course race is scheduled on Saturday and one (1) Random Leg Course race is scheduled on Sunday.
- 6.3 WINDWARD/LEEWARD DIVISION – Three (3) Windward/Leeward races are scheduled on Saturday and two (2) Windward/Leeward races are scheduled on Sunday.

7. CLASSES AND STARTING ASSIGNMENTS

Classes and Starting Assignments will be posted on-line at <https://bcyrcracing.org/phrf-championship-regatta/> by 1700 on the day before the first race.

8. RACING AREA

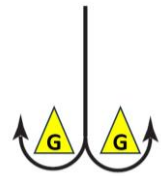
- 8.1 The racing area will be between Newport Pier and Oil Islands Emmy and Eva.
- 8.2 There are two separate Start/Finish areas:
 - 8.2.1 RANDOM LEG DIVISION – Located at N 33.37.153 and W 117.57.395
 - 8.2.2 WINDWARD/LEEWARD DIVISION – Located at N 33.36.500 and W 117.56.250

9. MARKS and COURSES

9.1 WINDWARD/LEEWARD ONLY

9.1.1 Marks and courses are shown on Attachment A

9.1.2 Marks “G” represent a gate. Boats must pass through the gate and may then round either of the gate marks as shown at right.



9.2 RANDOM LEG ONLY

9.2.1 Marks and courses are shown on Attachment B

9.3 No later than the warning signal for a class, the course to be sailed by that class will be displayed by Race Committee.

10. STARTING

- 10.1 The Starting Line will be between an orange flag on the Race Committee boat at the starboard end and an orange flag on a staff at the port end.
- 10.2 **The Starting Line is restricted to boats starting.**
- 10.3 Prior to the first warning signal, each boat shall sail by the Race Committee boat and hail her sail number.
- 10.4 A boat whose warning signal has not been made **shall** avoid the starting area.

- 10.5 Classes will be started in accordance with *RRS* 26...with the start signal for the class being the warning signal for the next starting class (commonly known as a “rolling start”).
- 10.6 Multiple short sound signals will be given approximately one (1) minute before the first warning signal of each race.
- 10.7. A boat that does not start within five (5) minutes after her starting signal will be scored Did Not Start (DNS) without a hearing. This changes *RRS* A5.1

11. FINISHING

- 11.1 WINDWARD/LEEWARD - The Finish Line will be between an orange flag on the Race Committee boat at the port end and an orange flag on a staff at the starboard end. This changes *RRS* Race Signals.
- 11.2 RANDOM LEG - The Finish Line will be between a blue flag on the Race Committee boat at the port end and an orange flag on a staff at the starboard end.
- 11.3 The Finish line is restricted to boats finishing.
- 11.4 Boats in the Random Leg Division **SHALL** stay clear of the Windward/Leeward course at all times.

12. TIME LIMIT

- 12.1 WINDWARD/LEEWARD - The Time Limit for a boat on the Windward/Leeward Course is fifteen (15) minutes after the first boat in its class has finished. This changes *RRS* 35.
- 12.2 RANDOM LEG - The Time Limit for a boat on the Random Leg Course is thirty (30) minutes after the first boat in its class has finished. This changes *RRS* 35.

13. PENALTY

RRS 44.1 is changed to a One-Turn Penalty.

14. PROTESTS AND REQUESTS FOR REDRESS

- 14.1 A boat intending to protest shall comply with *RRS* 61.1 **and** shall also notify the Race Committee as soon as possible, after finishing, of her intention to protest and identify the other boat(s) involved. This modifies *RRS* 61.1.
- 14.2 Protests and Requests For Redress shall be on written forms, which are available at the BCYC Front Office and shall be delivered there within the Protest Time Limit.
- 14.3 For each class the Protest Time Limit is 60 minutes after the Race Committee boat has docked. This time will be posted on the Official Notice Board.

14.4 Notices will be posted within 30 minutes of the Protest Time Limit to inform competitors of hearings in which they are parties or named as witnesses.

15. SCORING

15.1 Scoring for Windward/Leeward races will be based on Time-On-Time.

15.1.1 The Time Correction Factor will be $650/(550 + \text{PHRF})$ where PHRF is a boat's REGIONAL W/L rating.

15.2 Scoring for Random Leg Course races will be based on Time-On-Distance.

15.3 The Daily Score will be the sum of the scores for the races that day.

15.4 The Class score will be the sum of the boat's daily scores. There are no throwouts. This changes RRS A2.1

15.5 The Best Overall scoring for each Division will be the sum of the points earned each day based on the Rinderle B table. The boat with the highest point total in each Division will be the winner.

15.6 A boat that did not start/compete, did not finish, did not finish within the Time Limit, was disqualified, or retired shall be scored points for the finishing place one more than the number of starters in the boat's class. This changes RRS A5.2

15.7 One Random Leg Course race must be completed to constitute a series.

15.8 Three Windward/Leeward races must be completed to constitute a series.

16. RETIREMENTS

A yacht that retires from a race shall notify the Race Committee on VHF Channel 68 or telephone the BCYC Race Administrator at 949-644-9530 as soon as possible and before leaving the racing venue.

17. OFFICIAL BOATS

17.1 Official boats will be marked using Race Committee Flags.

17.2 The signal boat for the Windward/Leeward course is *CORINTHIAN SPIRIT*.

17.3 The signal boat for the Random Leg Course is *CAMELLIA*.

18. RADIO COMMUNICATION

18.1 A competitor shall neither make radio transmissions while racing nor receive radio transmissions not available to all boats. This restriction also applies to mobile telephones.

18.2 Race Committee will monitor VHF Channel 16 for emergencies.

18.3 Race Committee will use VHF Channel 68 to communicate information regarding the racing. Failure of the Race Committee to make a broadcast, the timing of the broadcast, or failure of a boat to hear the broadcast shall not be grounds for redress under *RRS* 62.1(a). This changes *RRS* 62.1 (a).

19. PRIZES

Prizes and trophies will be awarded after the last race.

20. DISCLAIMER

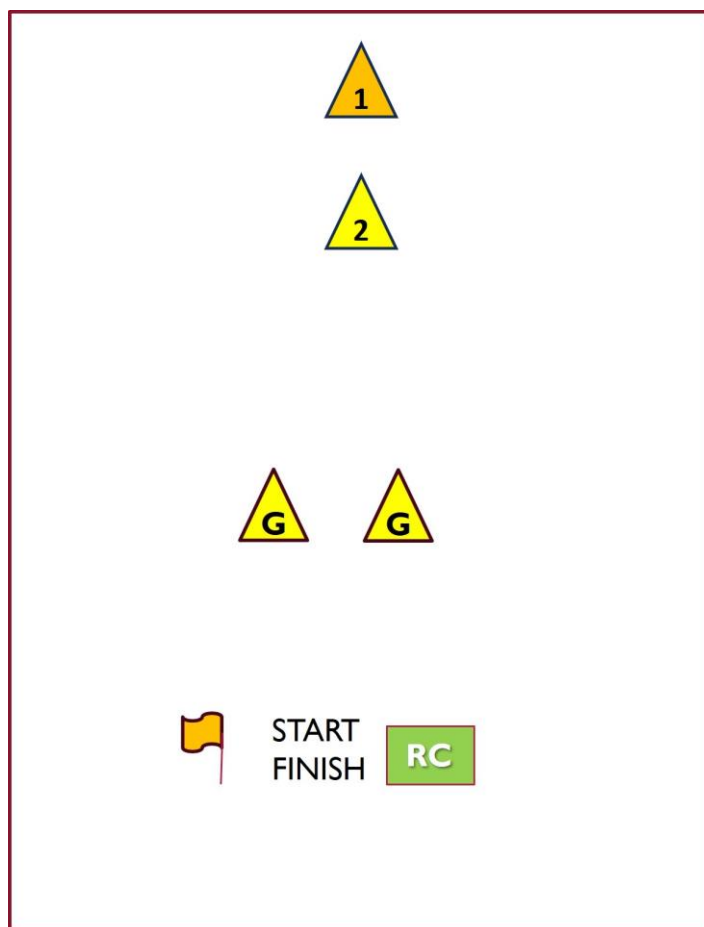
Sailing is an activity that has inherent risk of damage or injury. Competitors participate in the regatta entirely at their own risk. See *RRS* 3, Decision to Race. The race organizers (Organizing Authority, Ratings Authority, Race Committee, Protest Committee, host club, sponsors, or any other organization or official) will not be responsible for damage to any boat or other property or the injury to any competitor, including death, sustained as a result of participation in this race. By participating in this race, each competitor agrees to release the race organizer from any liability associated with such competitor's participation in this race to the fullest extent permitted by law.

21. INSURANCE

Each participating boat shall be insured with valid third-party liability insurance with a minimum cover of \$500,000.00 per event or equivalent

ATTACHMENT A

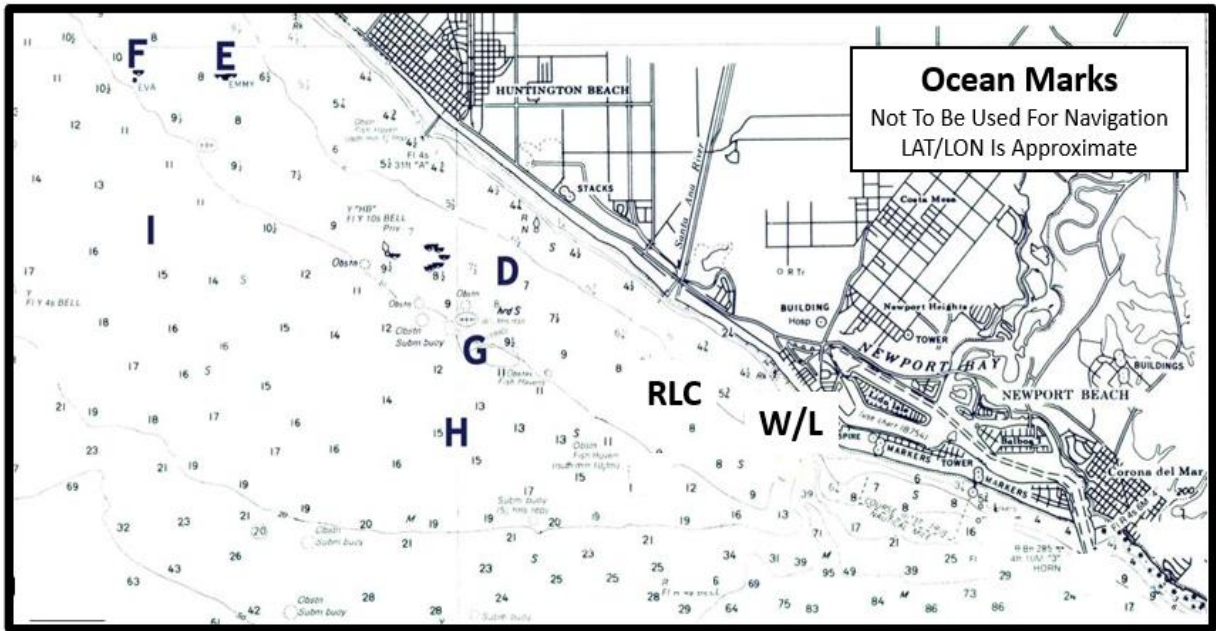
Windward/Leeward Marks and Courses



MARK	DESCRIPTION
1	Orange Tetrahedron
2	Yellow Tetrahedron
G	Yellow Tetrahedrons

COURSE #	MARKS
1	1-G-1-G-1-Finish
2	2-G-2-G-2-Finish
3	1-G-1-Finish
4	2-G-2-Finish
5	1-Finish
6	2-Finish

ATTACHMENT B Random Leg Course Marks



MARK	DESCRIPTION	LAT	LOX
W/L	WINDWARD/LEEWARD Start/Finish Line	N 33.36.500	W 117.56.250
RLC	RANDOM LEG Start/Finish Line	N 33.37.153	W 117.57.395
D	Orange Inflatable Mark	N 33.37.900	W 117.59.400
E	Oil Island "Emmy"	N 33.39.700	W 118.02.650

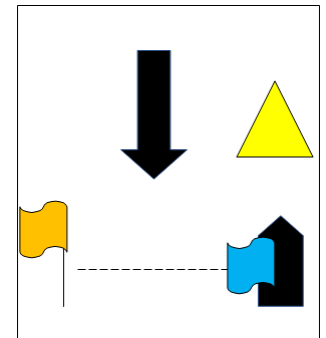
MARK	DESCRIPTION	LAT	LOX
F	Oil Island "Eva"	N 33.39.700	W 118.03.650
G	Orange Inflatable Mark	N 33.37.200	W 117.59.800
H	Orange Inflatable Mark	N 33.36.450	W 118.00.000
I	Orange Inflatable Mark	N 33.38.350	N 118.03.500

B.1 RANDOM LEG DIVISION ONLY

B1.1 Marks D, G, H and I will be orange tetrahedrons. Marks E and F are oil islands.

B1.2 Race Committee may anchor a yellow inflatable mark to windward of the start/finish line. This mark will be displayed on the course list as a black triangle and, if displayed, is a mark of the course.

B1.2.1 Boats finishing from their last mark **shall** keep this yellow mark, if anchored, to port as shown at right.



B1.2 Possible courses for the Random Leg Division are:

COURSE #	COURSE					
1	SF	F	H	D	H	FIN
2	SF	E	▲	D	FIN	
3	SF	D	▲	D	I	FIN
4	SF	I	H	I	H	FIN
5	SF	D	H	D	I	FIN
6	SF	D	H	D	E	FIN
7	SF	G	H	D	I	FIN
8	SF	E	F	H	FIN	
9	SF	D	H	G	E	FIN
10	SF	E	G	D	G	FIN
11	SF	D	I	Ds	H	FIN
12	SF	E	H	FIN		
13	SF	Hs	E	FIN		
14	SF	D	I	H	FIN	
15	SF	H	▲	D	H	FIN
16	SF	G	▲	D	H	FIN
17	SF	D	H	▲	D	FIN
18	SF	D	H	D	H	FIN