



Bahia Corinthian Yacht Club

2025 Bogart Race

SAILING INSTRUCTIONS

October 4-5, 2025

1. ORGANIZING AUTHORITY

Bahia Corinthian Yacht Club (BCYC) is the Organizing Authority for the Bogart Race.

2. RULES

- 2.1 The Race will be governed by the rules as defined in the current Racing Rules of Sailing, (*RRS*), the rules of the Performance Handicap Racing Fleet of Southern California (PHRF)), and the Notice of Race, except as altered by these Sailing Instructions.
- 2.2 The Race is classified as a Category "A" Event in accordance with ISAF Regulation 20.
- 2.3 Boats are subject to inspection by the appropriate fleet coordinator to ensure conformity to the applicable class rules, bylaws and/or measurement certificates.
- 2.4 US Sailing Safety Equipment Requirements (USSER) apply.
- 2.5 Engine use is permitted subject to SI 15 and Rule 2.5.1
 - 2.5.1 A boat's engine may not be put in-gear for propulsion until thirty (30) minutes after the start of that boat's class.
- 2.6 Spinnakers shall not be flown inside Newport Beach harbor.

3. NOTICES TO COMPETITORS

Notices to competitors will be posted on the BCYC website at www.bcy.org.

4. CHANGES TO SAILING INSTRUCTIONS

- 4.1 Any change to the sailing instructions will be posted on the BCYC website before 0900 hours on the day of the race.
- 4.2 Race Committee may also issue verbal changes to the sailing instructions during check-in while code flag L (Come Within Hail) is displayed.
- 4.3 Any change to the schedule of races will be posted on the BCYC website by 1900 hours on the day before the race.

5. SIGNALS MADE ASHORE

- 5.1 Signals made ashore will be displayed on the flagpole at BCYC.
- 5.2 When flag AP is displayed ashore, racing is postponed.

5.3 First Warning will be no less than 1 Hour after AP is removed.

6. SCHEDULE

6.1 The scheduled time for the first warning signal each day is **1055 hours**.

7. CLASSES BREAKS

7.1 Class Breaks will be determined using the PHRF Area D RLC Rating.

7.2 Starting Assignments and Class Breaks will be posted on the BCYC website before 0900 hours on the day before the first race.

8. RACING AREA

The Racing Area will be in the Pacific Ocean between Newport Beach, CA and Avalon, CA.

9. COURSES and MARK LOCATIONS

9.1 Courses will be random leg.

9.2 SATURDAY

9.2.1 Start off the Santa Ana River jetty (approximate GPS coordinates of 33.37.153 N and 117.57.395 W)

9.2.2 Finish between the “CG” buoy (approximate GPS coordinates of 33.20.968 N and 118.19.382 W) to port and the flagpole adjacent to the Avalon Casino as shown on Attachment A.

9.3 SUNDAY – Start off the Avalon Casino in the vicinity of the “CG” Buoy. Round the Newport Beach harbor entrance buoy (J mark) to port. Finish inside Newport Beach Harbor between government markers #5 and #6 as shown on Attachment B.

10. STARTING

10.1 SATURDAY - The Starting Line will be between an orange flag on the Race Committee boat to starboard and an orange flag on a staff to port.

10.2 SUNDAY - The Starting Line will be between the CG buoy to port and an orange flag on the Race Committee boat to starboard.




10.2.1 **The Race Committee boat will NOT be anchored. Competitors shall keep a safe distance from the Race Committee boat at all times.**

10.3 Races will be started by using RRS 26 using a “rolling start” method.

10.4 A boat whose warning signal has not been made shall avoid the starting area.

10.5 Prior to the first warning signal each boat shall sail by the Race Committee boat and hail her sail number.

- 10.6 To alert boats that a sequence of starts is about to begin, multiple short sound signals will be given approximately one (1) minute before the first warning signal.
- 10.7 A boat starting later than fifteen (15) minutes after her starting signal will be scored Did Not Start without a hearing. This changes *RRS* A5.1.
- 10.8 The scheduled order of start and the flags used by Race Committee for signaling will be:

| CLASS | SCHEDULED ORDER OF START | CLASS FLAG |
|-------|--------------------------|---|
| C | 1 |  |
| B | 2 |  |
| A | 3 |  |

11. FINISHING

- 11.1 SATURDAY - The Finish Line will be between the “CG” buoy (keep to port) and the flagpole adjacent to the Avalon Casino as shown on Attachment A.
- 11.1.1 In the event a vessel is tied to the “CG” buoy, the vessel shall be considered to be part of the buoy.
- 11.1.2 Race Committee will be positioned ashore at the base of the flagpole to record finish times. This changes the *RRS* definition of “Other Signals”.
- 11.2 SUNDAY – The finish line will be inside Newport Beach harbor between government markers #5 and #6. The Race Committee boat will be located near marker #6.
- 11.3 Boats shall report their engine use (total minutes that engine was in gear (even if zero minutes) to Race Committee via **VHF 68** no later than **15** minutes after finishing-
- 11.4 A minimum of thirty (30) minutes must be reported for each use of the engine. See SI 15.6 for further information.

12. TIME LIMIT

- 12.1 The Time Limit each day is 1900 hours (7 PM). Boats finishing after the Time Limit will be scored Time Limit Expired (TLE).
- 12.2 Race Committee personnel will be on-station at the finish Lines and record times until 1800 hours. After 1800 hours, racers **shall** record their own time

while finishing and **shall** report the finish time and any Engine Use Time to Race Committee on **VHF 68** no later than **15** minutes after finishing.

13. PENALTY SYSTEM

RRS 44.1 is changed to a One-Turn Penalty.

14. PROTESTS AND REQUESTS FOR REDRESS

- 14.1 A boat intending to protest SHALL comply with *RRS 60 & 61.1* and SHALL notify the Race Committee at the finish line via **VHF 68** of her intention to protest and identify the other boats involved.
- 14.2 Protests shall be on written forms, which are available at the BCYC Front Office or from Race Committee. Protests shall be delivered to Race Committee Principal Race Officer (PRO) within the Protest Time Limit.
- 14.3 The Protest Time Limit each day is **60 minutes** after the protesting boat has finished. This changes *RRS 61.3*
- 14.4 The parties will be advised under *RRS 63.2* of when and where the protest will be heard, which may be on a date and time other than immediately following the close of the Protest Time Limit.
- 14.5 Notice of protest by the Race Committee or Protest Committee will be posted on-line to inform boats under *RRS 61.1 (b)*.

15. SCORING

- 15.1 The handicap distances are:
 - 15.1.1 – Saturday - 24.5 nm
 - 15.1.2 – Sunday – 27.3 nm
- 15.2 Scoring will be according to the Rinderle B High-Point method for each day's race.
- 15.3 Scoring for the Series will be based on the sum of each day's points.
- 15.4 There are no throw-outs. This changes *RRS A2.1*
- 15.5 The Engine Use Penalty is $(\text{IN-GEAR-TIME} * 0.40 * \text{Square Root (LWL)})$. The Penalty will be added to the boat's Corrected Time.
- 15.6 A minimum of 30 minutes shall be recorded each time the engine is put in gear. Examples of reporting engine use follow:
 - 15.6.1 If the engine is used for 15 minutes, the reported engine use will be 30 minutes.
 - 15.6.2 If the engine is used for 47 minutes, the reported engine use will be 47 minutes.

16. RETIREMENTS

A yacht that retires from a race shall notify the Race Committee on **VHF 68** as soon as possible.

17. OFFICIAL BOATS

Official boats will be marked using Race Committee Flags.

18. RADIO COMMUNICATION

18.1 A competitor shall neither make radio transmissions while racing nor receive radio transmissions not available to all boats. This restriction also applies to mobile telephones.

18.2 Race Committee will monitor VHF Channel 16 for emergencies.

18.3 If still sailing at 1800 hours, boats shall hail the Race Committee on VHF Channel 68 to advise of their approximate location.

19. PRIZES

19.1 Prizes will be awarded in Avalon for the race from Newport Beach to Avalon

19.2 Series prizes will be awarded at Bahia Corinthian Yacht Club for the combined scoring of the race from Newport Beach to Avalon AND the race from Avalon to Newport Beach

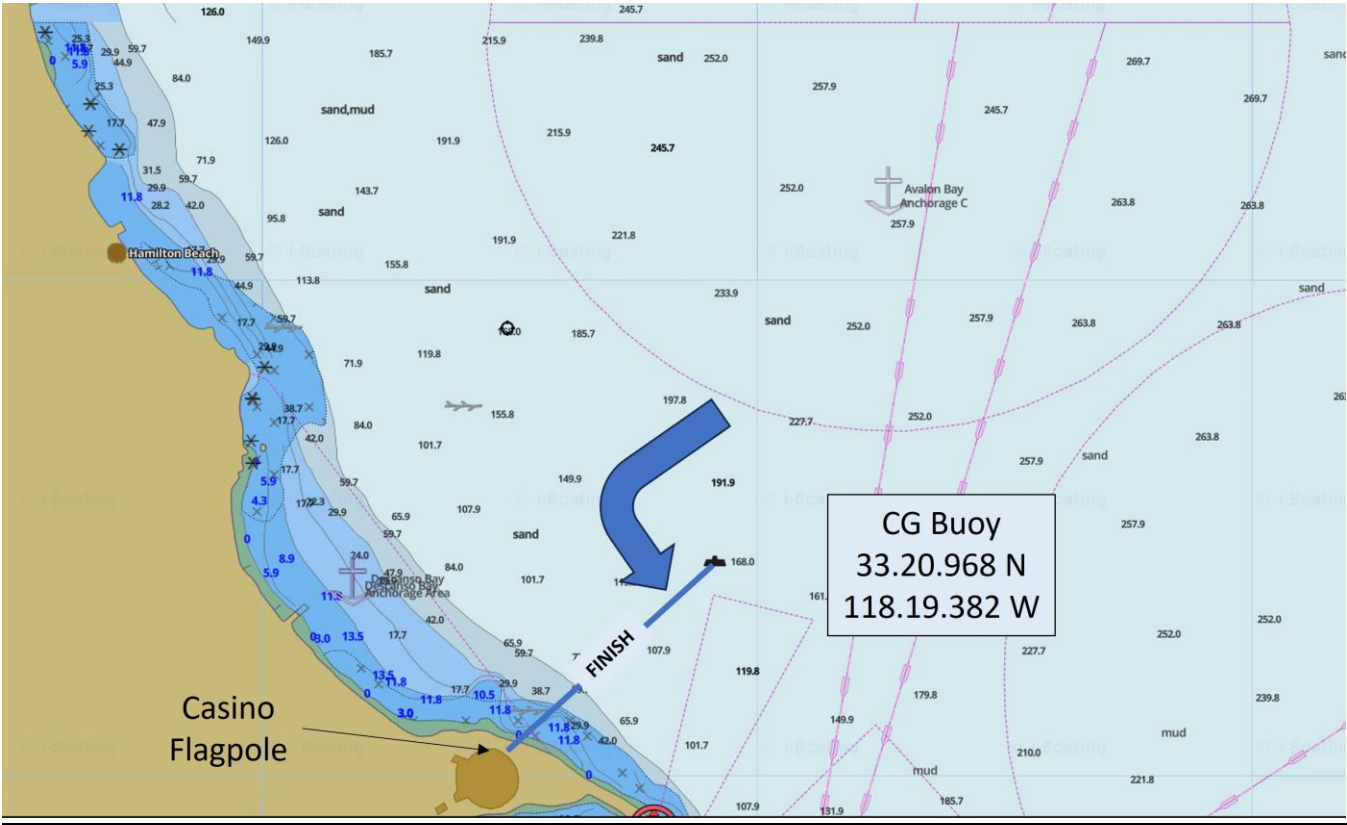
20. DISCLAIMER OF LIABILITY

Competitors participate in the race entirely at their own risk. See *RRS 3*, Decision to Race. The organizing authority will not accept any liability for material damage or personal injury or death sustained in conjunction with or prior to, during, or after the regatta.

21. INSURANCE

Each participating boat shall be insured with valid third-party liability insurance with a minimum cover of \$500,000.00 per event or equivalent.

ATTACHMENT A – Finish Line in Avalon



ATTACHMENT B – Finish Line in Newport Beach

