



2026 Around The Oil Islands Series

August 23, September 20, October 18

SAILING INSTRUCTIONS

1. ORGANIZING AUTHORITY

Bahia Corinthian Yacht Club (BCYC) is the Organizing Authority.

2. RULES

2.1 The Regatta will be governed by the rules as defined in the current Racing Rules of Sailing, (*RRS*), the rules of the fleet in which it sails, and the Notice of Race, except as altered by the Sailing Instructions.

2.2 US Sailing Safety Equipment Requirements (USSER) for Nearshore shall apply.

3. NOTICES TO COMPETITORS

Notices to competitors will be posted on the BCYC Racing website.

4. CHANGES TO SAILING INSTRUCTIONS

4.1 Any change to the Sailing Instructions will be posted on the BCYC Racing website before 0900 hours on the day of the race.

4.2 Any change to the schedule will be posted by 1900 hours on the day before the race.

4.3 Race Committee may issue verbal changes to the sailing instructions during check-in while code flag L (Come Within Hail) is displayed.

5. SIGNALS MADE ASHORE

5.1 Signals made ashore will be displayed on the flagpole at BCYC.

5.2 When flag AP is displayed ashore, racing is postponed.

5.3 First Warning will be no less than 1 Hour after AP is removed.

6. SCHEDULE

The first warning signal is scheduled for 1055 hours.

7. CLASSES

7.1 PHRF boats will be assigned to classes based on the boat's Area D Random Leg Course rating.

7.1.1 Race Committee may assign a boat to a class that is appropriate for the boat.

7.2 Class assignments will be posted on the BCYC Racing website before 1700 hours on the day before the race.

8. RACING AREA

The Racing Area will be in the Pacific Ocean off Newport Beach.

9. COURSE TO BE SAILED

9.1 Three courses may be sailed:

9.1.1 COURSE 1 – Start, Round Oil Island Edith to port, Pass Oil Island Ellen-Elly to port, Round Oil Island Eureka to port while passing through the gate described in SI 9.3, Finish. The handicap distance is 25.2 miles.

9.1.2 COURSE 2 – Start, Round Oil Island Esther to port, Pass Oil Island Eva to port while passing through the gate described in SI 9.4, Finish. The handicap distance is 24.9 miles.

9.1.3 COURSE 3 – Start, Round Oil Island Emmy to port, Round Oil Island Eva to port, Round Oil Island Emmy to port, Round Oil Island Eva to port while passing through the gate described in SI 9.4, Finish. The handicap distance is 18.0 miles.

9.2 The approximate locations of the Oil Islands are shown in Attachment A.

9.3 Racers on course 1 shall pass through a gate formed on one end by Oil Island Eureka and a virtual mark located approximately 250 yards SSW at GPS coordinates 33.33.687 N and 118.06.992 W.

9.4 Racers on courses 2 and 3 shall pass through a gate formed on one end by Oil Island Eva and a virtual mark located approximately 250 yards W at GPS coordinates 33.39.700 N and 118.03.875 W.

9.5 If, in the opinion of the Race Committee, conditions warrant, the course will be shortened at the virtual gates described in SI 9.3 or 9.4.

9.5.1 The Race Committee will position a Race Committee boat in the vicinity of the seaward end of the gate and will signal the shortened course in accordance with *RRS* 32.




9.5.2 The handicap distances for shortened course 1 is 14.4 miles, shortened course 2 is 17.0 miles and shortened course 3 is 10.0 miles.

9.6 The course numbers to be sailed by each class will be displayed at the start line on the Race Committee boat.

9.7 A Race Committee boat may be stationed near the virtual mark. **It is not a mark of the course.**

10. STARTING

- 10.1 The Start line will be located in the vicinity of Newport Beach Pier (approximate GPS coordinates of 33°36.500' N and 117°56.250' W).
- 10.2 The Start Line will be between an orange flag on the Race Committee boat to starboard and the course side of an orange inflatable mark to port.
- 10.3 Races will be started using *RRS* 26 with the start signal for the class being the warning signal for the next starting class (commonly known as a “rolling start”) in the order shown below:

START #	CLASS	FLAG
1	C	
2	B	
3	A	

- 10.4 A boat whose warning signal has not been made shall avoid the starting area.
- 10.5 Prior to the first warning signal each boat shall sail by the Race Committee boat and hail her sail number. Failure to check in may be protested by the Race Committee.
- 10.6 A boat starting later than fifteen (15) minutes after her starting signal will be scored Did Not Start (DNS) without a hearing. This changes *RRS* A4 and A5.

11. RECALLS

- 11.1 Individual recalls will be signaled in accordance with *RRS* 29.1. The Race Committee will attempt to hail On Course Side (OCS) sail numbers on Channel 68. However, neither the timing of this hail, equipment failure nor the failure of a boat to hear the hail shall be cause for redress from the Protest Committee.
- 11.2 General recalls will be signaled in accordance with *RRS* 29.2.

12. FINISHING

- 12.1 The Finish line will be located in the vicinity of Newport Beach Pier (approximate GPS coordinates of 33°36.500' N and 117°56.250' W).
- 12.2 The Finish Line will be between a blue flag on the Race Committee boat to port and the course side of an orange inflatable to starboard.
- 12.3 A Race Committee boat will be stationed at the virtual gate the Race Committee will log the time of all boats as they reach the virtual gate. Should

a class have fifty percent (50%) or fewer boats in the class finishing the race at the finish line described in SI 12.1 and 12.2 before the time limit specified in SI 13.1, the finish times for all boats in that class will be the times logged at the virtual gate. This changes *RRS 32.1*, *RRS 32.2*, and *RRS 35*.

12.4 If a class is finished at the virtual gate, the logged times at the gate will be the Finish Times for the class on that day.

13. TIME LIMIT

13.1 The Time Limit will be 1700 hours on each race day.

13.2 Any boat not finishing before the Time Limit will be scored Time Limit Expired (TLE). This changes *RRS 35*.

14. PENALTY SYSTEM

RRS 44.1 is changed to a One-Turn Penalty.

15. PROTESTS AND REQUESTS FOR REDRESS

15.1 A boat intending to protest shall comply with *RRS 60* and *61.1* and shall notify the Race Committee at the finish line of her intention to protest, and the other boats involved.

15.2 Protests shall be on written forms, which are available from the Principal Race Officer or at the BCYC Front Office.

15.3 Protests shall be delivered to the Principal Race Officer or to the BCYC Front Office within the Protest Time Limit.

15.4 If Race Committee shortens course as noted in SI 12.3, the Protest Time Limit is three (3) hours after the boat finished the shortened course. Otherwise, the Protest Time Limit is one (1) hour after the Race Committee Finish boat has docked. This changes *RRS 61.3*.

15.5 Notices will be posted within 30 minutes of the Protest Time Limit to inform competitors of hearings in which they are parties or named as witnesses.

15.6 The parties will be advised under *RRS 63.2* of when and where the protest will be heard, which may be on a date and time other than immediately following the close of the Protest Time Limit.

15.6 Notice of protest by the Race Committee or Protest Committee will be posted to inform boats under *RRS 61.1 (b)*.

16. SCORING

16.1 Daily scoring will be according to *RRS A4 - Low Point System*.

16.2 Area D PHRF RLC Ratings will be used for scoring PHRF boats.

16.3 Each race day, a boat's Daily Score will be her finishing position.

- 16.4 For Best-in-Class Series scoring, a boat's Series Score will be the sum of her Daily Scores.
- 16.5 For Best Overall Series scoring, a boat's Series Score will be the sum of her Daily Scores which have been assigned Points from the Rinderle B table. The boat with the Highest Point Total will be awarded Best Overall.
- 16.6 There are no throw out Daily Scores. This changes RRS A2.1
- 16.7 A boat that did not start/compete, did not finish, is disqualified, or retires, shall be scored points for the finishing place **one more** than the number of **starters** in the race. This changes RRS A5.2.

17. RETIREMENTS

A boat that retires from the race shall notify the Race Committee on VHF Channel 68 or contact the BCYC Office at 949-644-9530 as soon as possible after retiring.

18. OFFICIAL BOATS

Official boats will be marked using Race Committee Flags.

19. RADIO COMMUNICATION

19.1 Except in an emergency, or for the purpose stated in SI 17, a boat that is racing shall not make voice or data transmissions and shall not receive voice or data communication that is not available to all boats.

19.2 Race Committee will monitor VHF Channel 16 for emergencies.

20. PRIZES

20.1 Take-home prizes will be given out after racing each day.

20.2 The Perpetual trophies below will be awarded after the last day of racing.

TROPHY NAME	AWARDED TO
BCYC Around The Islands Perpetual	Best Corrected Time - Overall
Ted O'Connor Perpetual	Best Corrected Time – All Women Crew

21. DISCLAIMER OF LIABILITY

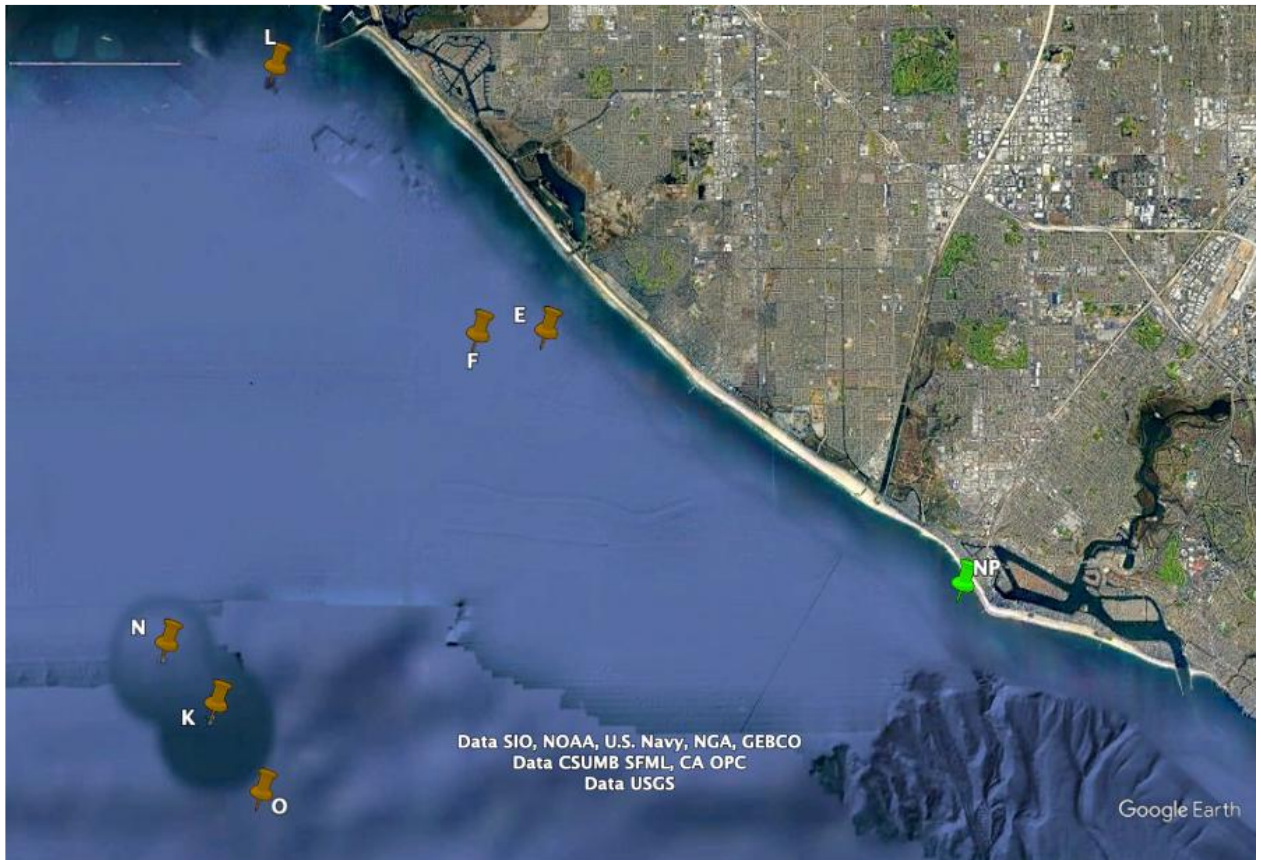
Competitors participate in the regatta entirely at their own risk. See RRS 3, Decision to Race. The organizing authority will not accept any liability for material damage or personal injury or death sustained in conjunction with or prior to, during, or after the regatta.

22. INSURANCE

Each participating boat shall be insured with valid third-party liability insurance with a minimum cover of \$500,000.00 per event or equivalent.

ATTACHMENT A

AROUND THE ISLANDS SERIES COURSE MARKS



Location	Approx. Latitude	Approx. Longitude
Newport Pier Start/Finish (NP)	33.36.500 N	117.56.250 W
Oil Island Emmy (E)	33.39.700 N	118.02.650 W
Oil Island Eva (F)	33.39.700 N	118.03.650 W
Virtual Mark, Oil Island Eva	33.39.700 N	118.03.875 W
Oil Island Ellen-Elly (K)	33.34.960 N	118.07.740 W
Oil Island Esther (L)	33.43.200 N	118.06.800 W
Oil Island Edith (N)	33.35.762 N	118.08.498 W
Oil Island Eureka (O)	33.33.843 N	118.06.949W
Virtual Mark, Oil Island Eureka	33.33.687 N	118.06.992 W