



2026 Pier-To-Pier Series

Sailing Instructions

July 25, August 15, September 12

1. ORGANIZING AUTHORITY

Bahia Corinthian Yacht Club (BCYC) is the Organizing Authority for the Pier-To-Pier Series.

2. RULES

2.1 The Regatta will be governed by the rules as defined in the current Racing Rules of Sailing, (*RRS*), the rules of the Performance Handicap Racing Fleet of Southern California (PHRF), and the Notice of Race, except as altered by these Sailing Instructions.

2.2 The Regatta is classified as a Category "A" Event in accordance with ISAF Regulation 20.

2.3 The current US Sailing Safety Equipment Requirements (USSER) for Near Shore shall apply.

3. NOTICES TO COMPETITORS

Notices to competitors will be posted at www.bcyocracing.org.

4. CHANGES TO SAILING INSTRUCTIONS

4.1 Any change to the sailing instructions will be posted at www.bcyocracing.org before 0900 hours on the day of the race.

4.2 Any change to the schedule of races will be posted at www.bcyocracing.org by 1900 hours on the day before the race.

4.3 Race Committee may also issue verbal changes to the sailing instructions during check-in while code flag L (Come Within Hail) is displayed.

5. SIGNALS MADE ASHORE

5.1 Signals made ashore will be displayed on the flagpole at BCYC.

5.2 When flag AP is displayed ashore, racing is postponed.

5.3 First Warning will be no less than 1 Hour after the AP in SI 5.2 is removed.


6. SCHEDULE

The scheduled first warning signal is **1230** hours each race day.

7. CLASSES

- 7.1 Classes will be assigned by Race Committee.
- 7.2 Class assignments will be posted at www.bcyrcracing.org before 0900 on the day of the race.

8. RACING AREA AND RACES




- 8.1 The Racing Area will be between Balboa Pier and Newport Pier.
- 8.2 Multiple races may be run. Race Committee will signal that another race is to be run by displaying the “#1” pennant  at the finish line indicating one more race.

9. COURSES and MARKS

- 9.1 Course Marks are shown on Attachment A
- 9.2 All marks shall be taken to port unless signaled otherwise by Race Committee
- 9.3 The course to be sailed by a class will be displayed by Race Committee.
- 9.4 Different classes may sail different courses.

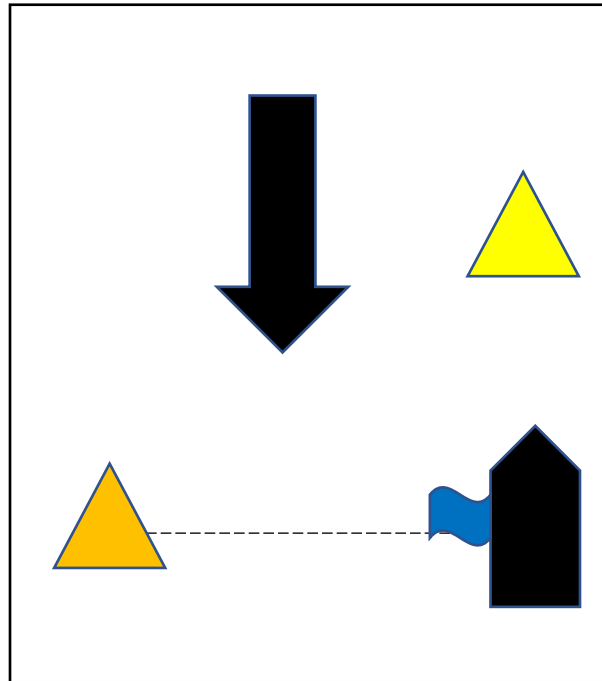
10. STARTING

- 10.1 The Starting area will be located in the vicinity of Balboa Pier.
- 10.2 The Starting Line will be between an orange flag on the Race Committee boat at the starboard end of the line and the course side of an orange inflatable mark at the port end of the line.
- 10.3 Prior to the first warning signal, each boat shall sail by the Race Committee boat and hail her sail number.
- 10.4 A boat whose warning signal has not been made shall avoid the starting area.
- 10.5 Classes will be started in accordance with *RRS 26*...with the start signal for the class being the warning signal for the next starting class (also known as a “rolling start”).
- 10.6 Multiple short sound signals will be given approximately one (1) minute before the first warning signal.
- 10.7 The scheduled order of start and the flags used by Race Committee for signaling will be:

CLASS	ORDER OF START	CLASS FLAG
C	1	
B	2	
A	3	

11. FINISHING

- 11.1 When **FINISHING** from the last mark, keep Mark #4 to port as shown on the diagram below.
- 11.2 The Finish Line will be between a blue flag on the Race Committee boat at the port end of the finish line and the course side of an orange inflatable mark at the starboard end of the line.



12. TIME LIMIT

The Time Limit for a boat is thirty (30) minutes after the first boat in its class has finished. Any boat finishing after the Time Limit will be scored **TLE** (Time Limit Expired). This changes *RRS 35*.

13. PENALTY SYSTEM

RRS 44.1 is changed to a One-Turn Penalty.

14. PROTESTS AND REQUESTS FOR REDRESS

- 14.1 A boat intending to protest shall comply with *RRS 60.1* & *61.1* and shall also notify the Race Committee at the finish line of her intention to protest and identify the other boats involved. This modifies *RRS 61.1*.
- 14.2 Protests and Requests For Redress shall be on written forms, which are available at the BCYC Front Office and shall be delivered there within the Protest Time Limit. This changes *RRS 62.2*.

- 14.3 For each class the Protest Time Limit is 60 minutes after the Race Committee boat has docked. The docking time will be posted on the Official Notice Board.
- 14.4 Notices will be posted within 30 minutes of the Protest Time Limit to inform competitors of hearings in which they are parties or named as witnesses.
- 14.5 The parties will be advised under *RRS* 63.2 of when and where the protest will be heard, which may be on a date and time other than immediately following the close of the Protest Time Limit.

15. SCORING

- 15.1 The daily score will be the score for the race run that day.
- 15.2 The Series Class Overall will be the sum of the boat's daily scores.
- 15.3 There are no throwouts. This changes *RRS* A2.1
- 15.4 A boat that did not start, did not finish, was disqualified, or retired, shall be scored points for the finishing place **one more** than the number of **starters** in the race. This modifies *RRS* A5.2

16. RETIREMENTS

A yacht that retires from a race shall notify the Race Committee on VHF Channel 68 or telephone the BCYC Race Administrator at 949-644-9530 as soon as possible and before leaving the racing venue.

17. OFFICIAL BOATS

Official boats will be marked using Race Committee Flags.

18. RADIO COMMUNICATION

- 18.1 A competitor shall neither make radio transmissions while racing nor receive radio transmissions not available to all boats. This restriction also applies to mobile telephones.
- 18.2 Race Committee will monitor VHF Channel 16 for emergencies

19. PRIZES

- 19.1 Take-home trophies will be given out after each day of racing.
- 19.2 Trophies for the Series will be given out after the last race.

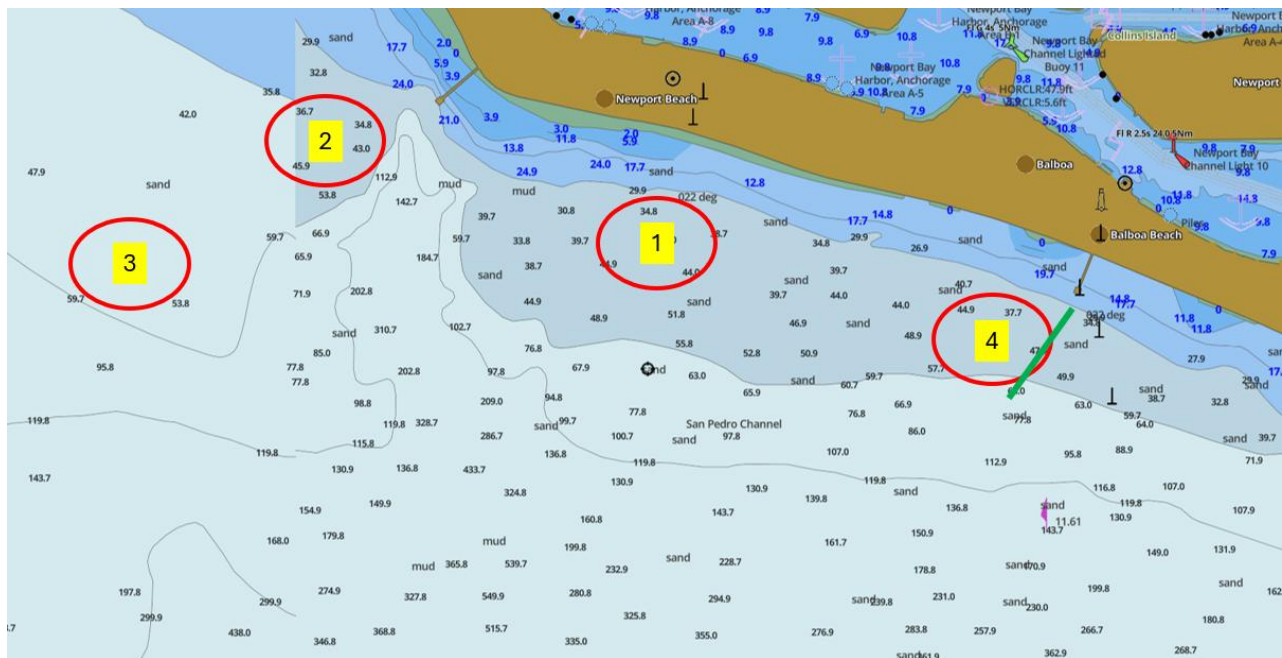
20. DISCLAIMER OF LIABILITY

Competitors participate in the regatta entirely at their own risk. See *RRS 4, Decision to Race*. The organizing authority will not accept any liability for material damage or personal injury or death sustained in conjunction with or prior to, during, or after the regatta.

21. INSURANCE

Each participating boat shall be insured with valid third-party liability insurance with a minimum cover of \$500,000.00 per event or equivalent

ATTACHMENT A
(Not To Scale)



MARK	DESCRIPTION	APPROX. LAT	APPROX. LON
1	Orange Inflatable	33°36'3.12"N	117°55'6.12"W
2	Orange Inflatable	33°36'13.68"N	117°56'5.11"W
3	Orange Inflatable	33°35'59.79"N	117°56'27.52"W
4	A yellow inflatable approximately 200 yards forward of the start/finish line.		